

CLC Connect

July 2025

Bi-Monthly update

In this issue we hear from Sarah Jones MP
Minister of State at both the Department for Business and Trade,
and the Department for Energy Security and Net Zero

Short Term Priorities and Actions

Priority progress

Get the latest updates from our four priority areas:

[Net Zero + Biodiversity](#)

[Next Generation Delivery](#)

[Building Safety](#)

[People + Skills](#)



Construction
Leadership
Council



Department for
Business & Trade

Welcome to CLC Connect, the Construction Leadership Council's Bi-Monthly newsletter which will keep you up to date with all things CLC.

Construction is a busy and fast changing industry. From new government policies and game-changing private sector initiatives to emerging technologies and innovative ways of working, there's a lot going on as we strive to grow, improve productivity, attract and retain talent, and successfully transition to Net Zero.

CLC Connect will keep you informed, celebrate success, and help bring us closer together.

We're keen to hear your feedback and story ideas so please get in touch via:

construction.enquiries@businessandtrade.gov.uk

Enjoy and thank you for reading.



Construction
Leadership
Council



Construction
Leadership
Council



Department for
Business & Trade



Bi-Monthly Update

Sarah Jones MP

Minister of State at both the Department for Business and Trade, and the Department for Energy Security and Net Zero

Welcome to the tenth edition of the Construction Leadership Council's Connect Newsletter.

As we move towards the summer break, I wanted to reflect on the last few months as Minister of State for Industry and Co-Chair of the Construction Leadership Council, and what this means for the construction sector.

As Government, we have been clear on our commitment to the sector. At the [Spring Statement](#), the Chancellor announced £625 million investment to tackle skills shortages in the construction sector. I was pleased to join the Deputy Prime Minister and industry leaders at the first meeting of the newly established and Government supported Construction Skills Mission Board, chaired by Mark, to oversee the delivery of this work.

We also published our [Industrial Strategy](#) setting out a strategy for backing the UK's strengths with ambitious plans for eight high-growth sectors. As a sector, you will play a key role in enabling us to meet those ambitions.

During my meetings with firms in the industry, one key message has been the need for stability and having a clear forward pipeline of work so you're able to plan accordingly.

Our [10 Year Infrastructure Strategy](#) sets out our aim to deliver £725 billion of public and private sector investment in economic and social infrastructure, recognising that schools and hospitals are just as vital to our economy as energy, road and rail.

The forthcoming National Infrastructure and Construction Pipeline will set out the full range of projects to be taken forward providing investors and firms in the supply chain with long-term confidence as we seek to grow the UK's economy.

The construction sector is not just about projects, it's also about people. We recognise we need to do more to protect our workforce and provide a healthier, safer and more resilient environment for them to work in, to deliver our ambitions.

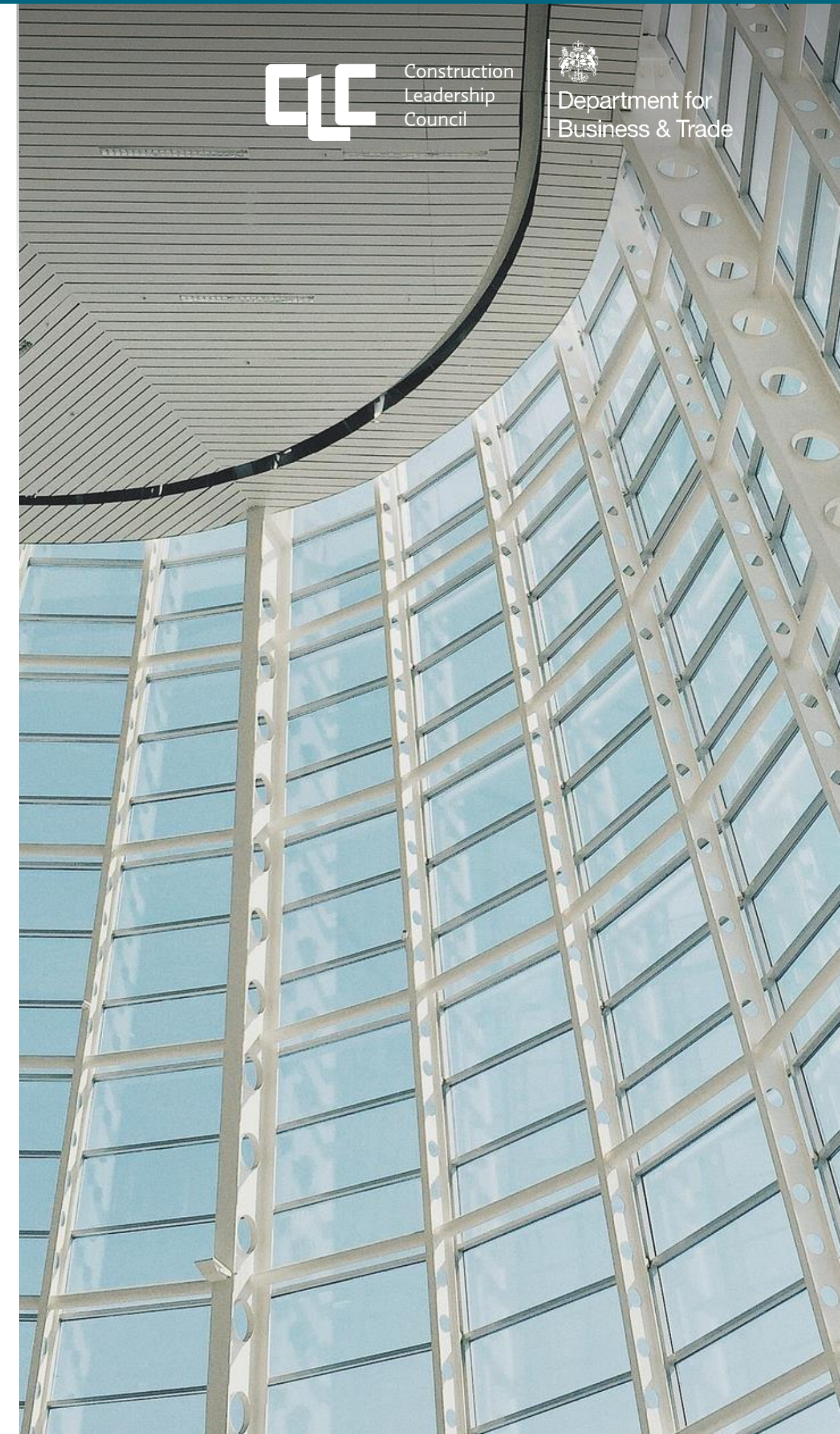
cont/...



Construction
Leadership
Council



Department for
Business & Trade





Bi-Monthly Update

Sarah Jones MP

Minister of State at both the Department for Business and Trade, and the Department for Energy Security and Net Zero

I was delighted to launch the CLC's [Health, Safety and Wellbeing Strategy](#), which brings together key existing forums, on 1st July at a Summit attended by over 150 leaders in London. I would welcome your support of the CLC's Strategy. Please contact [Stuart Young](#) if you'd like to get involved.

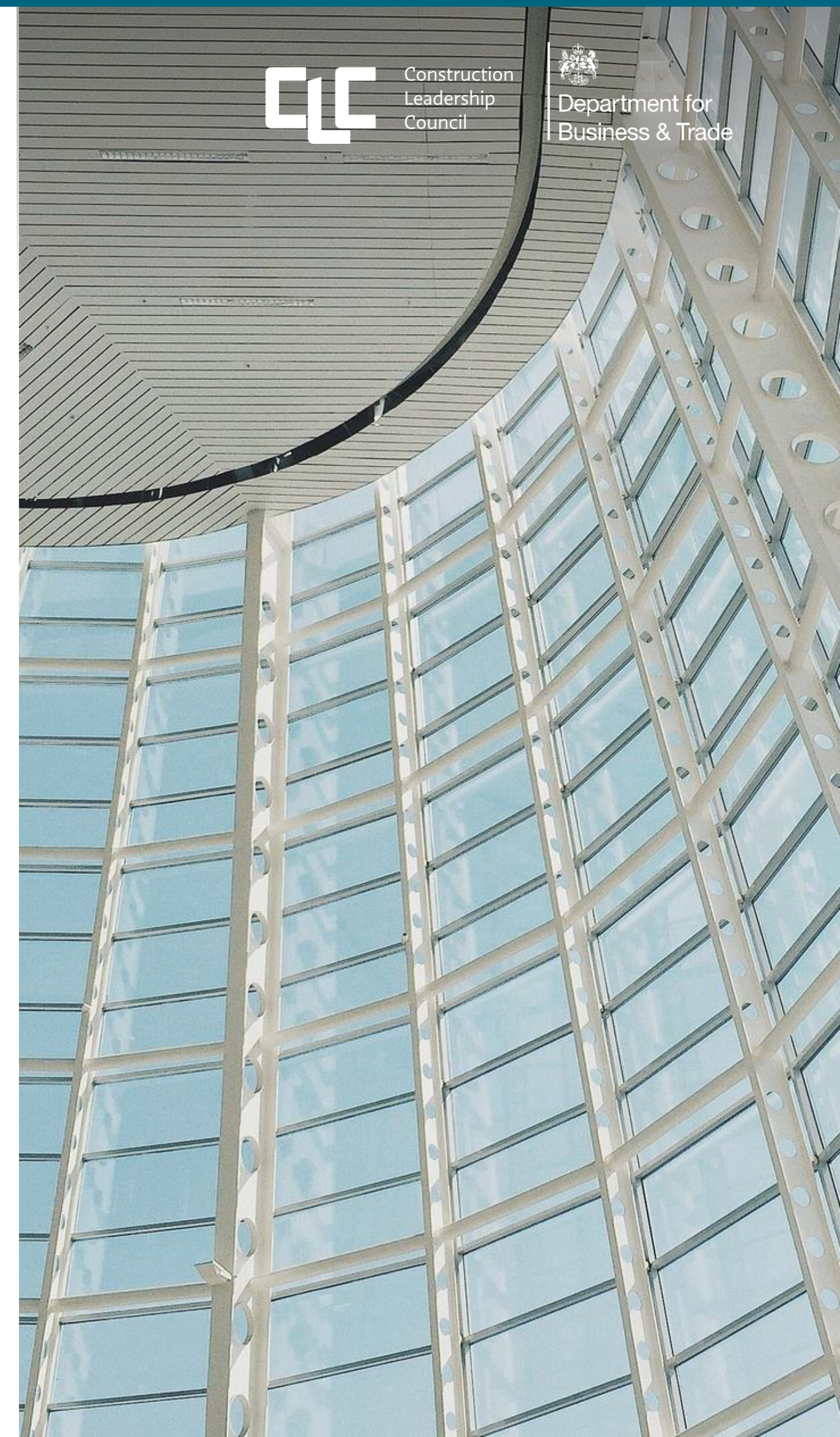
There is still much to be done that we can work together to deliver. In the Autumn, we will publish the Warm Homes Plan, setting out our ambitions in the retrofit space across domestic and non-domestic buildings. Work continues on the Long-Term Housing Strategy.

In recent months, I know that the Construction Leadership Council has been working across many other areas, including:

- Ongoing engagement with the Building Safety Regulator and HMG colleagues to discuss industry concerns and identify practical solutions in relation to Building Control Approval for Higher-Risk Buildings.

- Developing 'Construct AI'- an industry-driven initiative to support the Government's ambition of increasing AI adoption across the construction sector. Through a series of industry workshops, the initiative has identified key outcomes, e.g. promoting environmental sustainability, with the overarching goal of accelerating AI integration across the sector.

In closing, I would like to thank Mark and Richard for their leadership of the Council, and the many volunteers delivering the work set out in this newsletter, together with the CLC's wider work.



Bi-Monthly Update

Short Term Priorities and Actions

Making Tax Digital for Income Tax - getting ready for the new way to do tax returns

From 6 April 2026, HMRC is introducing MTD for Income Tax. This will affect sole traders and landlords with qualifying income over £50,000 from self-employment and property.

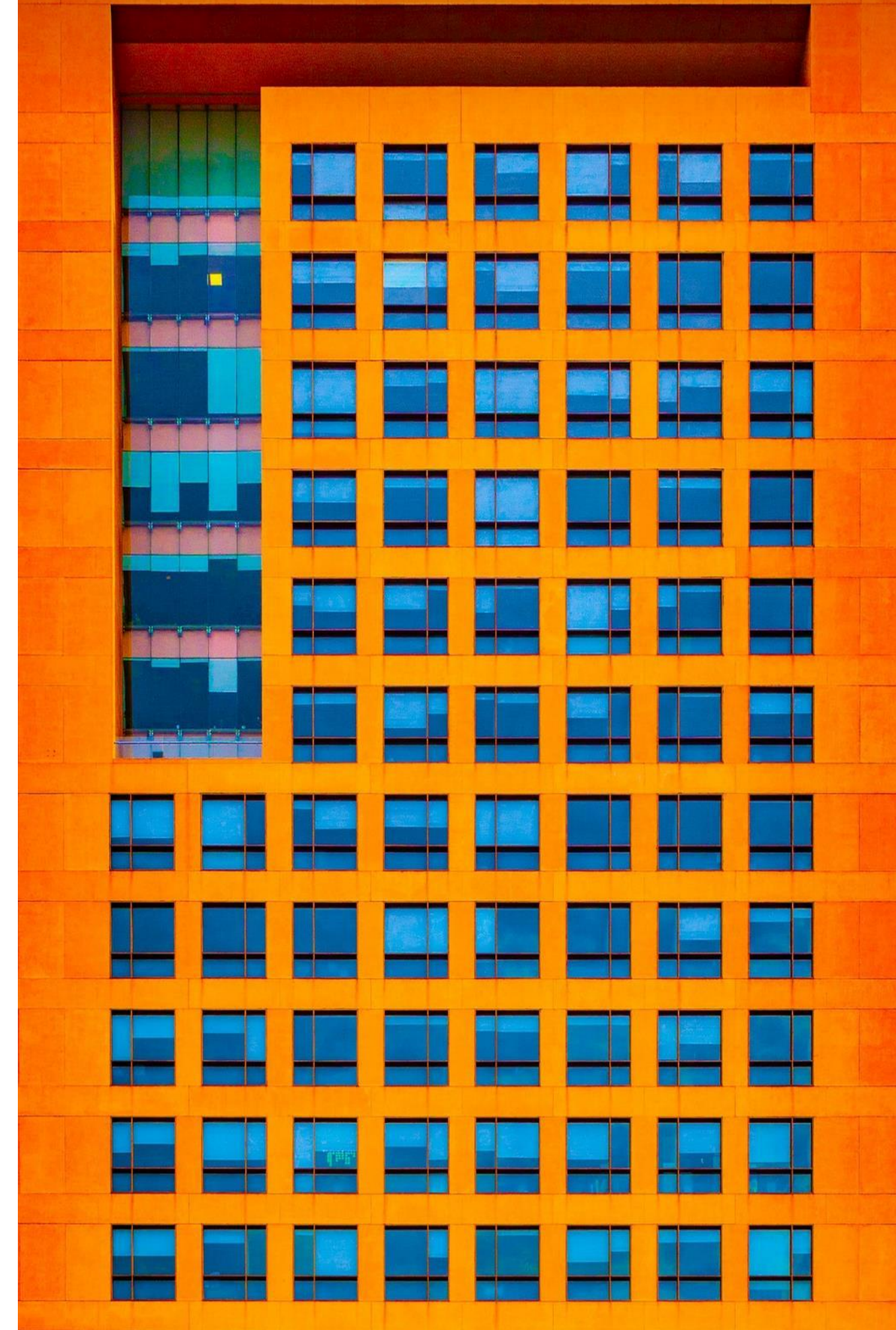
To find out more information, including when to start, how it works and a step-by-step guide, visit HMRC's new [MTD for Income Tax website](#).



Construction
Leadership
Council



Department for
Business & Trade



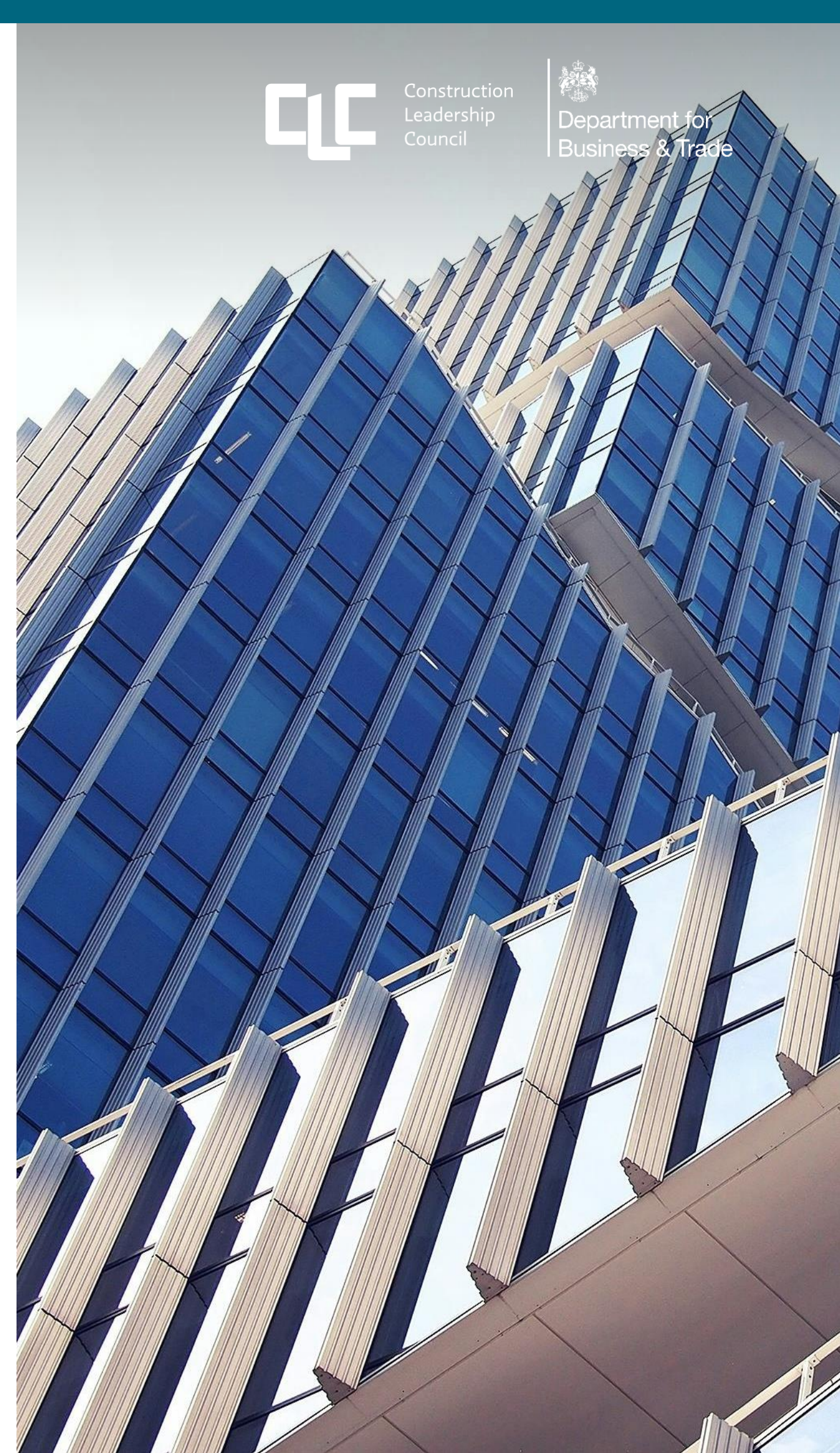
Opportunities for Engagement

Health Safety and Wellbeing Strategy

Minister Jones launched the CLC's [Health Safety and Wellbeing Strategy](#) on 1st July at an in-person summit in London attended by over 150 industry leaders. The Strategy brings together and builds on the knowledge, expertise and experience of existing key forums in this space and will address the key challenges in this space. Please contact [Stuart Young](#) if you'd like to get involved.

CO₂nstructZero

As the programme continues to grow, we are recruiting for the next set of Business Champions. Further details including how to apply are [here](#).



CLC Priority Progress

Net Zero and Biodiversity

Construct Zero

Construct Zero has announced its latest set of [Business Champions](#) as the programme continues to grow. Across the summer, the team will be reviewing and refreshing the Performance Framework, including the nine priorities, following the Committee for Climate Change's [7th Carbon budget report](#).

As part of this work, we have recently held a roundtable with Emma Pinchbeck and senior industry leaders to discuss the strategic challenges and implication for the wider built environment sector, following the report's publication.

The team are also planning an Autumn celebration event for existing Business Champions and Partners. This will provide a great opportunity for our 280+ supporters to come together in-person, build relationships, share best practice and hear from industry leaders on some of the key challenges we are

collectively facing in the transition to net zero.

As part of our wider engagement with Government, the GCB and Construct Zero, along with DBT are continuing to support the Defra Circular Economy Taskforce and DESNZ's Net Zero Council, including design of a Built Environment Roadmap.



Construction
Leadership
Council



Department for
Business & Trade





Getting to know you...

Chris Jenkins

Design & Innovation Director
RDM Electrical & Mechanical Services

RDM Electrical and Mechanical Services was originally set up as RDM Electrical Services Limited in 1988 by its two founding Directors. It is now part of the wider Raven Delta Group – an innovative, high quality, multi-faceted group of companies which also includes EFT Consult and DRS FM Services – providing full building services design and facilities management solutions.

As a leading UK building services and maintenance company, they have gained their renowned reputation over the last 37 years; delivering bespoke, innovative, and flexible designs.



www.rdmems.co.uk

Tell us what your role is in a nutshell -

As Design & Innovation Director at RDM Electrical & Mechanical Services, I lead our projects with a clear focus on Net Zero, innovation, and wellbeing. My role spans the full project lifecycle — from early-stage design and specification, through to installation, commissioning, and ongoing maintenance. I'm responsible for ensuring that our engineering solutions meet the highest environmental standards, while also creating healthier spaces for the people who use them. Our work is always rooted in a holistic view of building performance and sustainability.

Why did you become a CZ Business Champion?

Becoming a CO₂nstruct Zero Business Champion was a natural step for us. We're regularly engaged with public sector clients and government departments who are prioritising decarbonisation, and it's crucial that we not only meet those expectations but help shape them. We see it as our responsibility to lead by example — applying our technical expertise to reduce emissions and deliver high-performance, low-carbon environments. Being part of the CZ network helps us stay accountable, share best practice, and collaborate with others who are on the same path.

What is your proudest Net Zero moment so far this year?

In the last 12 months, we've delivered two Net Zero schools — including the award-winning Pembrokeshire Welsh-Medium Primary School, which was designed and built with full consideration of long-term carbon and wellbeing impacts. Read the case study [here](#).

We were also incredibly proud to be recognised with [Best Sustainability Project](#) at the 2024 ECA Industry Awards — a testament to the commitment of our whole team and our belief that good engineering can make a measurable difference.

Tell us an interesting fact about you or the business you represent

What makes RDM — and our wider group, [Raven Delta](#) — different is our truly holistic approach. Alongside our engineers, we work with in-house doctors, professors, and specialists in indoor environmental quality (IEQ). That means we don't just design and deliver sustainable systems — we help diagnose, monitor, and improve the environments people live and work in, with measurable impact on health, wellbeing and energy performance.

It's about building for the future — safely, smartly, and sustainably.

CLC Priority Progress

Next Generation Delivery

Construct AI

The CLC is leading an industry-driven initiative, “Construct AI”, to support the UK Government’s ambition of increasing AI adoption across the construction sector.

Through a series of industry workshops, the initiative has identified key outcomes—such as promoting environmental sustainability—with the overarching goal of accelerating AI integration across the industry.

The workshops highlighted several key enablers that Construct AI will focus on:

- Create an industry ‘Test Bed’ to connect problem owners with solution providers in a safe, collaborative environment.
- Promote existing industry groups and communities to encourage shared learning.
- Develop a case study library, organised by sector and, where possible, tailored to specific industry roles.
- Identify standards and best practices, along with guidance and support available to the sector.

- Develop a 3-horizon roadmap, helping organisations understand how to get started with AI and mature over time.

Construct AI aims to bring together government, industry, and academia to transform the construction sector. The initiative is actively seeking contributors and sponsors — please get in touch if you’d like to be involved.

Information Management Initiative

Launched in [November 2024](#) by the CLC with support from [nima](#), the [Information Management Initiative](#) has gained wide industry backing. Founding sponsors and signatories include professional bodies, trade associations, tech providers, contractors, and consultants.

Promoted by nima at Digital Construction Week, the IMI has recently welcomed new supporters including Arcadis UK and Rider Levett Bucknall, joining early backers such as AtkinsRéalis and BSI.

The CLC is now calling for more C-suite support to sign on ([become a signatory](#)). The IMI aims to build sector-wide capabilities in emerging digital technologies like AI, IoT, and digital twins.

../cont



Construction
Leadership
Council



Department for
Business & Trade

CLC Priority Progress

Next Generation Delivery

A need reinforced by the UK Government's recent Comprehensive Spending Review. To drive change, the IMI Steering Group is being refreshed with early supporters ready to lead within their organisations. As progress is made, resources and lessons will be shared through the [IMI Framework](#) (formerly the UK BIM Framework), endorsed by the Construction Playbook.

The IMI team is also developing a series of projects intended to help industry build new common and practical approaches to data and information management challenges. Organisations will be invited to invest in these projects and be among the first to capitalise upon new advances.

Duty to Report on Payment Practices and Performance – On 1 March 2025 the Reporting on Payment Practices and Performance (Amendment) Regulations 2025 came into force. These Regulations amend existing regulations, which impose a requirement on large businesses

and limited liability partnerships (LLPs) to publish certain information twice per financial year about their practices, policies and performance in relation to paying suppliers. Qualifying businesses and LLPs are now required to publish certain information with respect to retention clauses in any qualifying construction contracts with suppliers. Qualifying businesses are required to collect data and report (twice per year) on these new metrics for each financial year beginning on or after 1 April 2025.

Businesses which commence their financial year on 1 April 2025 and use a qualifying construction contract, will be required to submit retentions information in their 6 months report scheduled to be submitted by October 2025.

The Regulations can be found [here](#). Updated [guidance](#) is also available.



Construction
Leadership
Council



Department for
Business & Trade

CLC Priority Progress

Building Safety

Building Safety – Higher-Risk Buildings Building Control Approval

The Government, BSR and industry are committed to deliver buildings and facilities that are safe for those who live and work in them. In Spring 2025, the CLC established a joint BSR and industry Task and Finish Group to review the project journey through the building control process to improve the quality/consistency of the industry applications and speed up the timescale for responses from the Regulator.

The CLC has published [guidance](#) relating to the Building Control Approval application process for a new HRB. This guidance was developed by the CLC, BSR and industry experts. The guidance aims to provide the baseline principles to guide those involved in submitting and assessing applications for Gateway 2 applications. The guidance suite is summarised in one document and covers:

Guidance Note 01 – The Building Safety Regime for a new Higher-Risk Building – Summary process map of the building safety

regime process for a Building Control Approval Application for a new Higher-Risk Building.

Guidance Note 02 – Sufficient Level of Design – Approach to the sufficient level of design detail for a Gateway 2 Building Control Approval application.

Guidance Note 03 – Approval with Requirements – Approach and management of the use of Approval with Requirements for a Gateway 2 Building Control Approval application.

Guidance Note 04 – Application Information Schedule – Baseline design information to be submitted for a Gateway 2 Building Control Approval application. This includes an example Information Schedule.

Guidance Note 05 – Application Project Brief – The use and submission of an Application Project Brief for a Gateway 2 Building Control Approval application. This includes an example Project Brief.

Building
Safety

CLC Priority Progress

Building Safety

Guidance Note 06 – Application Document Management and Submission – Best practice for document management and submission to the Building Safety Regulator online portal for a Gateway 2 Building Control Approval application. This includes an example Folder Structure and Contents Schedule.

Guidance Note 07 – Application Strategy for a Single Building Staged Application or Applications for a Multi-Building Development – The use and submission of an Application Strategy for a staged building control approval application or applications for multiple buildings within a single development. This includes an example Application Strategy.

The principles supporting a clear and comprehensive application for Building Control Approval are common for all types of building work. Therefore, the guidance suite may also be useful for Building Control Approval Applications for work in an existing HRB, in particular category A work. Some of the elements may also be relevant for category B work.

This guidance suite will evolve over time to incorporate new subject areas, and any lessons learned as feedback is received from both the BSR and industry. Further details can be found [here](#).

Building Control Approval Data – The BSR has [published](#) its first set of management information data for the Building Control function for HRBs in England. The data will be updated quarterly.

Reforms to the Building Safety Regulator – MHCLG [announced](#) a package of measures to speed up housebuilding including a new Fast Track Process, changes to leadership and fresh investment.

Remediation Acceleration Plan – MHCLG has published a [press release](#) and [update](#) to the Remediation Acceleration Plan outlining the progress that has been made and also introduces new measures. The Government intends to bring forward a Remediation Bill, when parliamentary time allows to clarify responsibilities, introduce a legal duty to remediate and provide government with backstop powers to intervene where necessary.

Building
Safety

CLC Priority Progress

Building Safety

Grenfell Inquiry Phase 2

Recommendations - The Government has published the first quarterly progress [update](#) on implementation of the Grenfell Inquiry’s Phase 2 Report, together with an update on the recommendations from Phase 1 relating to Personal Emergency Evacuation Plans.

Statement on Higher-Risk Buildings Roof

Gardens – [Guidance and updated statement](#) has been published by the Ministry of Housing, Communities and Local Government (MHCLG) on whether a roof garden is considered a storey when determining whether a building is a higher-risk building (HRB). MHCLG’s view remains that roof gardens are not storeys for these purposes.

BS 9991:2024 – Fire Safety in the Design, Management and use of Residential

Buildings. Code of Practice - The CLC has published an [Advisory Note](#) on BS 9991:2024 – Code of Practice. The note was developed in conjunction with the Building Safety Regulator (BSR), British Standards Institution, National Fire Chiefs Council and Local Authority Building Control. It has been developed for those seeking to understand how to prepare or assess

Building Control Approval Applications for HRBs, where an update to existing technical industry guidance has been issued by the publishing body. The Advisory Note should be read in conjunction with a [letter](#) to the CLC from the BSR. The letter sets out the approach of the Regulator to BS 9991:2024 in its role as a building control authority for HRBs in England. The CLC Advisory Note and BSR letter provide the current position following the publication of BS 9991:2024 and supersedes any previous advice.

Building Control Independent Panel - The Government has [announced](#) the appointment of five members to the Panel. This delivers on a Grenfell Inquiry recommendation, accepted by the Government, to set up a panel to carry out a review of whether to change the way in which building control is delivered in England. The [Terms of Reference](#) are also now available. The Panel has published a [Problem Statement](#).

Building Safety Levy - The Levy will now come into effect in Autumn 2026. MHCLG has [published](#) the Government’s response to the building safety Levy technical consultation which ran from 23 January 2024 to 20 February 2024.

Building
Safety

CLC Priority Progress

People and Skills

Government committed at the Spring Budget funding of £625 million for construction skills in England over four years to boost existing training routes, ensure a sustainable flow of skilled construction workers and support employers to invest in training. This is expected to deliver up to 60,000 additional skilled construction workers this Parliament.

Construction Skills Mission Board - The CLC has supported the set up of the Construction Skills Mission Board (CSMB). The CSMB is industry-led pulling together senior leaders across the construction industry, working collaboratively to secure the workforce needed to meet future demand and commitments to deliver the infrastructure and built environment announced by government, to develop and deliver a construction skills action plan and provide strategic leadership to the construction sector. The Board will be working with government - DfE, Skills England, NISTA, DBT, MHCLG, DESNZ and DWP – to use industry insights to inform skills and labour market policy to help build the capacity and capability of the construction workforce.

Through this partnership the Board will be responsible for the development and delivery of a Construction Workforce Delivery Action Plan. The Board has proposed a target of 100,000 new construction workers each year for the remainder of the Parliament. Industry representatives will work with sector bodies and the wider industry to deliver the Action Plan.

The CSMB held its first meeting on 26 June, co-chaired by Mark Reynolds with the DPM Angela Rayner and attended by Minister Jones (DBT/DESNZ), Baroness Smith (DfE) and Minister Kendall (DWP). A full CSMB membership list is [here](#).

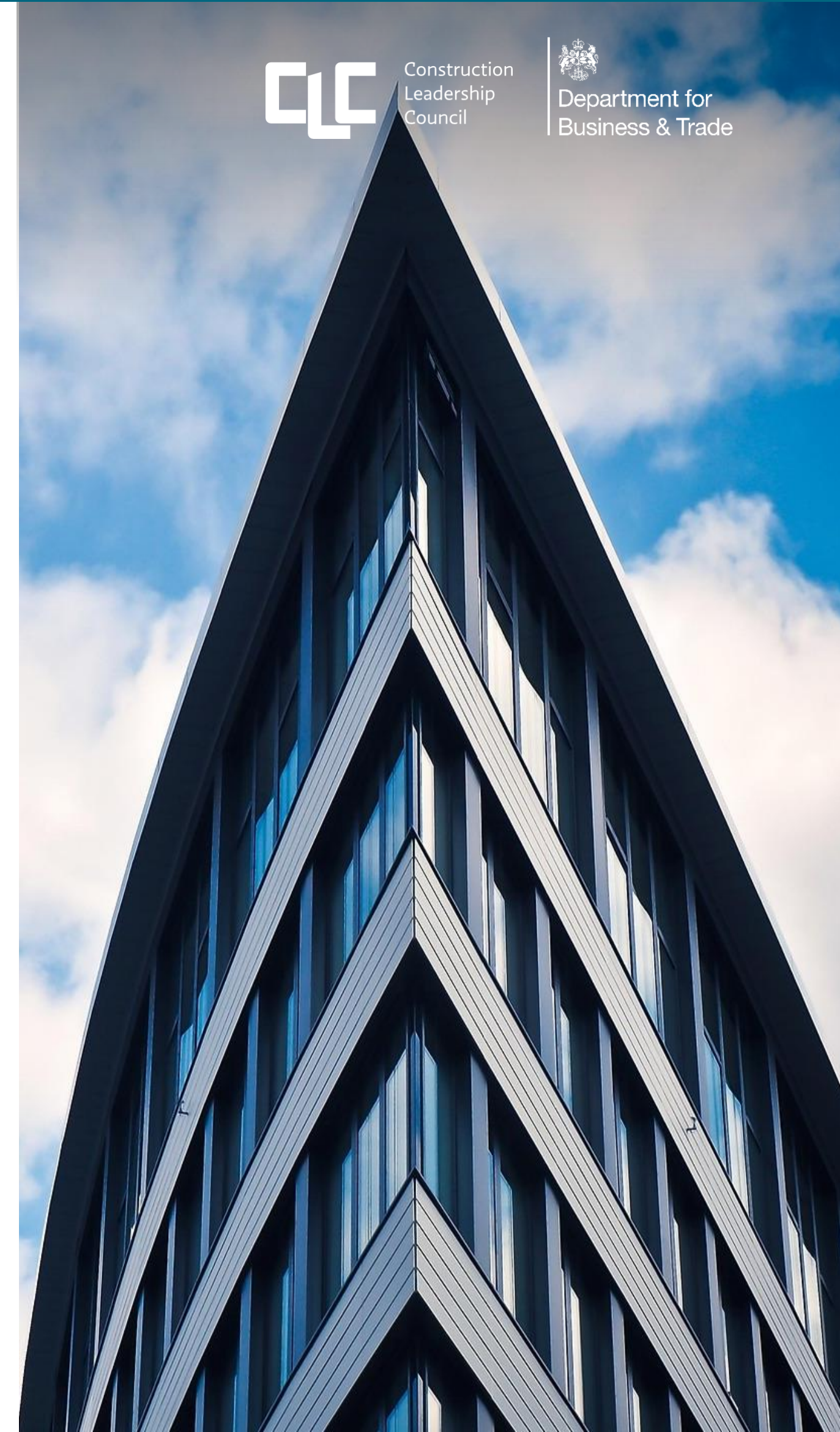
The terms of reference can be found [here](#) and a full press release of the announcement [here](#). Further updates will be provided shortly on next steps for the work and how this will be progressed.



Construction
Leadership
Council



Department for
Business & Trade



Government Update

Industrial Strategy - The government has published its Modern Industrial Strategy, a 10-year plan to drive up economic growth by making the UK the best place in the world in which to invest and grow a business. The strategy contains plans to reform the business environment – removing barriers to innovation, cutting unnecessary regulation, and making it quicker, easier and more profitable to do business. It focusses on eight sectors with the greatest growth potential and markets of the future. Construction is foundational to unlocking growth in these sectors through the provision of essential facilities and infrastructure. Read the full Strategy [here](#).

Spending Review 2025 - The recent Spending Review delivered the government's Plan for Change, setting out multi-year spending plans for the rest of Parliament and setting departmental budgets. It focuses on investing in the UK's security, health, and economy thorough investment in public services and infrastructure projects, including £113bn capital investment in homes, transport, and energy to drive growth, jobs, and further investment. Read the full review [here](#).

10 Year Infrastructure Strategy - The [Strategy](#) sets out the government's long-term plan for economic and social infrastructure. It is supported by at least £725bn of government funding infrastructure over the next decade. The [National Construction and Infrastructure Pipeline](#) will set out a full range of projects to be taken forward providing business with long-term investment confidence.

Trade Strategy -The [Trade Strategy](#) marks a reset in the UK's approach to international trade. Building on Free Trade Agreements (FTAs), it is designed to stimulate economic growth, through delivery of targeted business support and working with international partners to achieve mutual benefit through more agile agreements.

Immigration White Paper – The Government has announced new changes to the points-based immigration system, set out in its [White Paper](#) published in May. The CLC's Movement of People Workstream will shortly be convening to update its advice and guidance documentation and to engage with the Migration Advisory Committee, so that the sector is adequately represented at the decision-making table.



Construction
Leadership
Council



CLC Connect

July 2025

Thank you for reading this issue of CLC Connect. If you would like to provide feedback then please email construction.enquiries@businessandtrade.gov.uk

For more information about the Construction Leadership Council, please visit [Construction Leadership Council](https://www.constructionleadershipcouncil.org.uk).



Construction
Leadership
Council



Department for
Business & Trade

