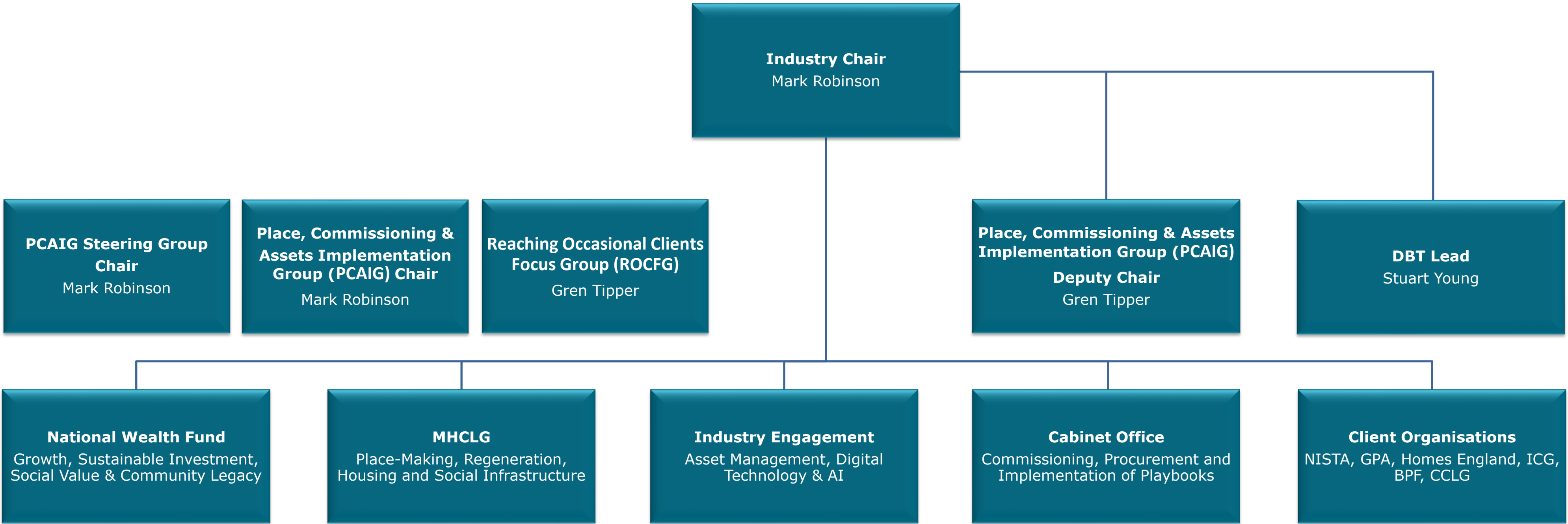


Place, Commissioning & Assets Implementation Group - Governance



Place, Commissioning & Assets Implementation Group – Terms of Reference

Workstream Objective	Benefits	Governance & Key Resources
<p>The Group will lead the CLC industry client group for Property & Construction:</p> <ul style="list-style-type: none">➤ Liaising with the CLC infrastructure client workstream➤ Co-ordinate effort across the industry➤ Focus on implementation and feedback within place-making, commissioning and asset management disciplines➤ Directly influence other areas of importance across CLC and Government	<ul style="list-style-type: none">➤ Clear guidance and support for clients➤ Robust mechanisms to support the placemaking agenda➤ Tools and techniques for smarter commissioning➤ Consistency in standards across asset management➤ Utilisation of the latest development in digital tools and artificial intelligence➤ Support for improvement in social infrastructure➤ Lead and provide help on best practice in social value and community benefits	<p>Lead and Chair of the Group: Mark Robinson</p> <p>Workstream Lead: Mark Robinson</p> <p>Deputy Chair & Secretariat services: Gren Tipper</p> <p>DBT Lead: Stuart Young</p> <p>The meeting schedule will consist of a full group meeting every quarter, with a steering group meeting between (6 weeks) each main group meeting.</p> <p>Engagement of the wider client base along with their consultants and suppliers will be achieved by encouraging wider participation at full group meetings every quarter.</p>
Strategic Goals & Deliverables	Approach: Main Activities and Milestones	Critical Success factors
<p>Three strategic goals:</p> <p>Place – to help progress and streamline the placemaking and regeneration agenda at Government, national, regional and local level ensuring communities continue to grow and thrive.</p> <p>Commissioning – give clear direction & guidance to clients and commissioning organisations on effective commissioning and procurement practices, supported by examples of good practice.</p> <p>Assets – give asset owners tools and techniques to help them manage their asset portfolios efficiently and effectively. Adopting the principles of Playbooks and measuring progress. Identifying good examples to share utilising members’ links to specific areas of good practice in action.</p>	<p>The Group will improve outcomes for all involved in the Built Environment:</p> <ul style="list-style-type: none">➤ Supporting the measures & targets for all CLC work groups➤ Provide a meeting place for clients, their consultants and suppliers to meet & share good practice➤ Provide advice on commissioning and procurement➤ Encourage all clients to support the place-making agenda.➤ Identify barriers & provide solutions for asset management➤ Grow the use of playbooks.➤ Encourage the publication of pipelines among clients.➤ Make best use of digital technology and artificial intelligence➤ Promote performance measurement of buildings in use.➤ Explore how best to reach and influence occasional clients.➤ Improved social value, communities and growth.	<ul style="list-style-type: none">➤ Positive client feedback➤ Collaboration across CLC workstreams➤ Consistent approach to place-making➤ Adoption of government playbooks➤ Smarter commissioning from client organisations➤ Improving standards for asset management➤ Increase the use of digital technology & AI